

Application: gvSIG desktop - gvSIG bugs #3377

Marker fill symbol pattern gap

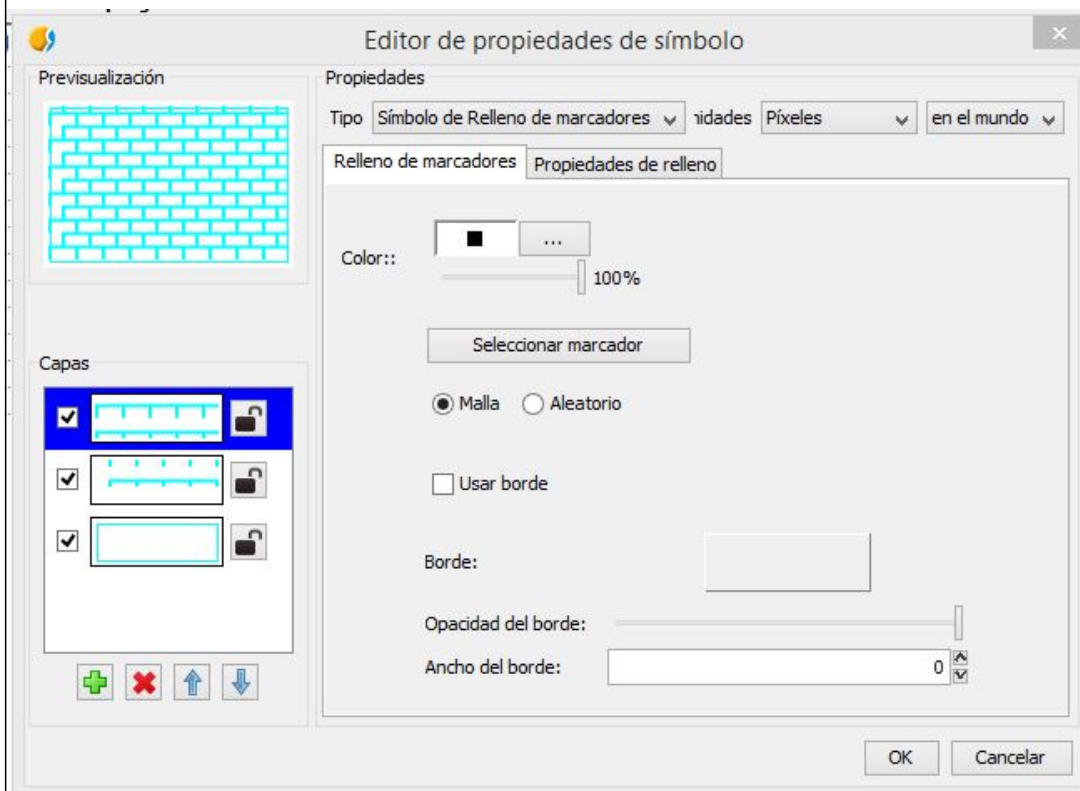
04/21/2015 11:24 AM - Javier Galán

Status:	New	% Done:	0%
Priority:	Normal	Spent time:	0.00 hour
Assignee:			
Category:	Symbology		
Target version:			
Severity:	Minor	Add-on version:	
gvSIG version:	2.1.0	Add-on build:	
gvSIG build:	2269	Add-on resolve version:	
Operative System:	Windows	Add-on resolve build:	
Keywords:		Proyecto:	
Has patch:		Hito:	
Add-on name:	Unknown		

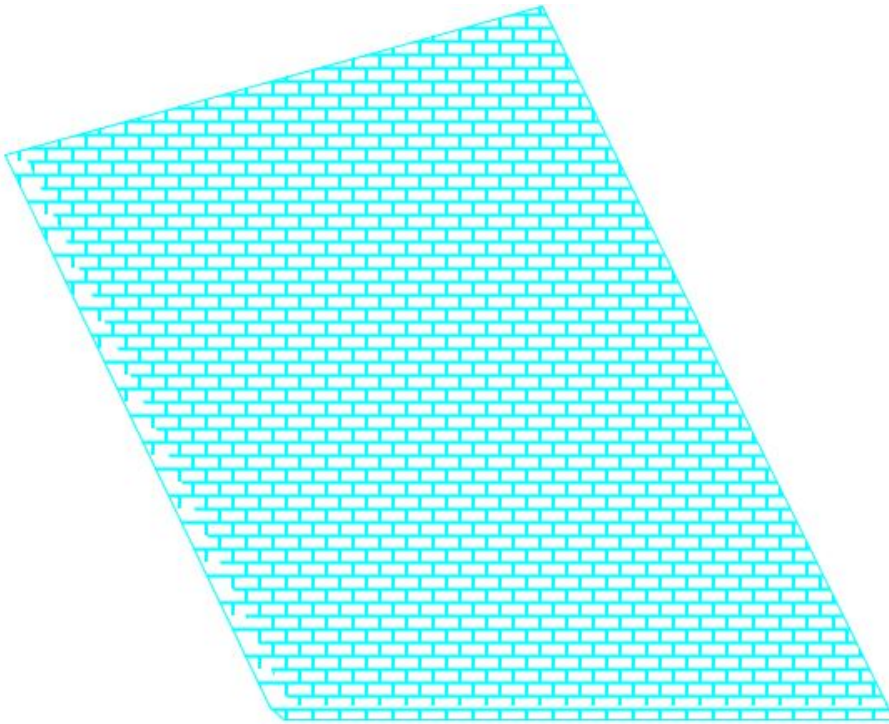
Description

I defined a pattern using the symbol editor.

It's defined with three layers one for the border, and two for the pattern. this are defined as Marker fill symbol



When it's applied it to a feature the result is a bit strange



There's some gaps just only at the left. It's supposed to be as the righth side.

It happens with each pattern I created.

Attached the captures and the symbol.

History

#1 - 10/23/2015 12:16 PM - Álvaro Anguix

- Category set to Symbology

Files

Captura_2.JPG	66 KB	04/21/2015	Javier Galán
Captura_1.JPG	50.9 KB	04/21/2015	Javier Galán
sg_equipamientos.gvssym	15.2 KB	04/21/2015	Javier Galán