

Application: gvSIG desktop - gvSIG feature requests #1618

sort table column OutOfMemoryError / sin memoria al ordenar una columna

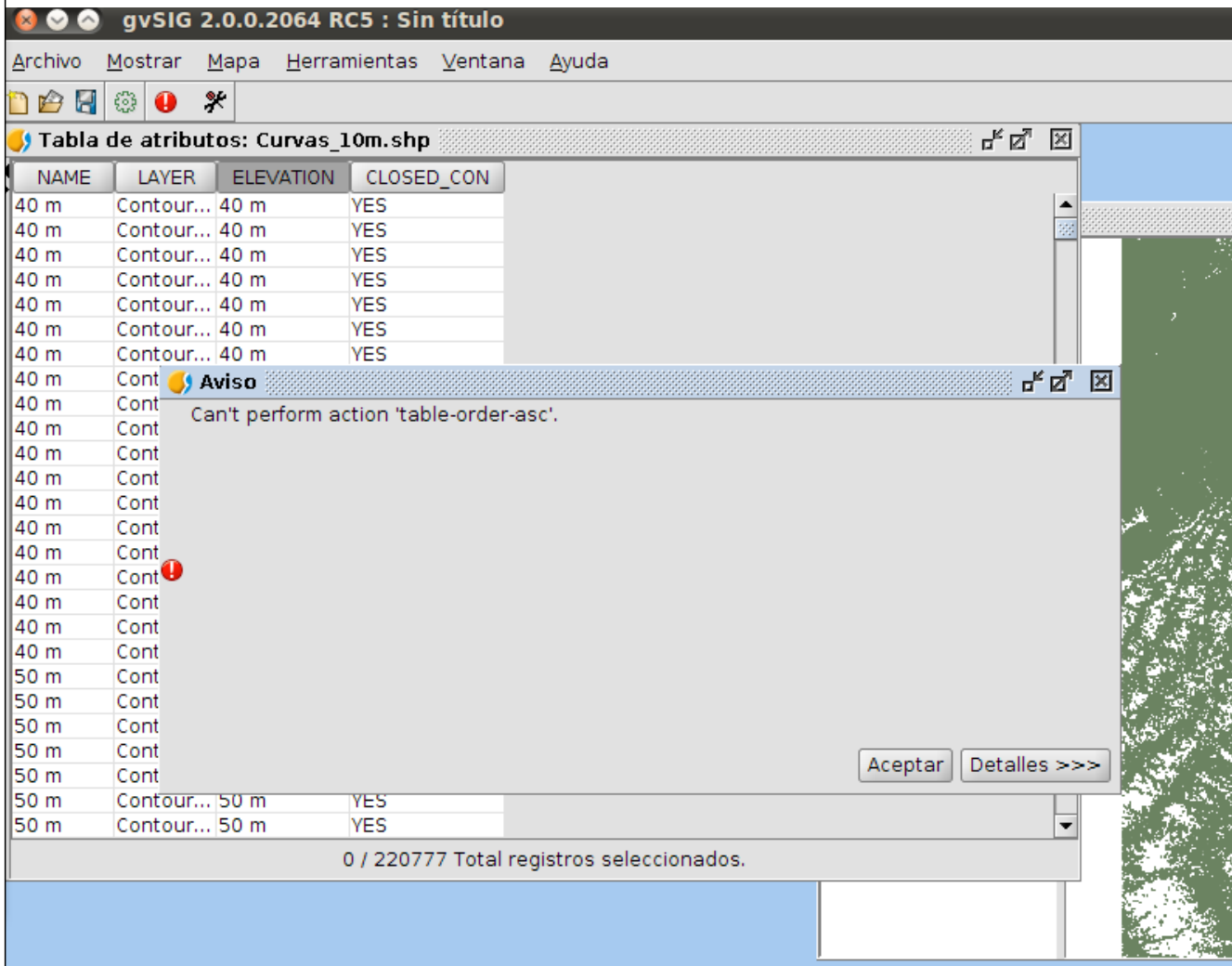
02/13/2013 09:28 PM - José Vicente Higón

Status:	Closed	% Done:	0%
Priority:	Normal	Spent time:	0.00 hour
Assignee:			
Category:	Document table		
Target version:			
gvSIG version:	2.0.0	Add-on resolve version:	
Keywords:		Add-on resolve build:	
Has patch:	No	Proyecto:	
Add-on name:	Unknown	Hito:	
Add-on version:			

Description

A java.lang.OutOfMemoryError exception occurs when you try to sort a table column (shapefile with 200000 rows).

Salta una excepción por falta de memoria cuando intentas ordenar un campo de una tabla (shapefile con 200000 registros).



ERROR [AWT-EventQueue-1] (MDIFrame.java:831) - Can't perform action 'table-order-asc'.

```
java.lang.OutOfMemoryError: Java heap space
  at java.util.Arrays.copyOf(Unknown Source)
  at java.util.ArrayList.ensureCapacity(Unknown Source)
```

```

at java.util.ArrayList.add(Unknown Source)
at org.gvsig.fmap.geom.primitive.GeneralPathX.lineTo(GeneralPathX.java:285)
at org.gvsig.fmap.geom.primitive.impl.OrientablePrimitive2D.addVertex(OrientablePrimitive2D.java:407)
at org.gvsig.fmap.dal.store.shp.utils.SHPFile.fillCurve(SHPFile.java:497)
at org.gvsig.fmap.dal.store.shp.utils.SHPFile.getGeometry(SHPFile.java:374)
at org.gvsig.fmap.dal.store.shp.SHPStoreProvider.loadFeatureProviderByIndex(SHPStoreProvider.java:370)
at org.gvsig.fmap.dal.store.shp.SHPFeatureProvider.load(SHPFeatureProvider.java:30)
at org.gvsig.fmap.dal.store.shp.SHPFeatureProvider.getCopy(SHPFeatureProvider.java:74)
at org.gvsig.fmap.dal.feature.impl.featureset.FastOrderedIterator.<init>(FastOrderedIterator.java:31)
at org.gvsig.fmap.dal.feature.impl.featureset.DefaultFeatureSet.fastIterator(DefaultFeatureSet.java:367)
at org.gvsig.fmap.dal.feature.impl.featureset.DefaultFeatureSet.doAccept(DefaultFeatureSet.java:321)
at org.gvsig.tools.visitor.impl.AbstractIndexedVisitable.accept(AbstractIndexedVisitable.java:51)
at
org.gvsig.fmap.dal.feature.paging.impl.FeaturePagingHelperImpl.loadDataFromFeatureSet(FeaturePagingHelperImpl.java:398)
)
at
org.gvsig.fmap.dal.feature.paging.impl.FeaturePagingHelperImpl.loadCurrentPageDataNoSelection(FeaturePagingHelperImpl.java:382)
java:382)
at
org.gvsig.fmap.dal.feature.paging.impl.FeaturePagingHelperImpl.loadCurrentPageData(FeaturePagingHelperImpl.java:311)
at org.gvsig.tools.dynobject.impl.DefaultDynObjectPagingHelper.setCalculator(DefaultDynObjectPagingHelper.java:166)
at
org.gvsig.tools.dynobject.impl.DefaultDynObjectPagingHelper.setDefaultCalculator(DefaultDynObjectPagingHelper.java:171)
at org.gvsig.fmap.dal.feature.paging.impl.FeaturePagingHelperImpl.reload(FeaturePagingHelperImpl.java:273)
at
org.gvsig.fmap.mapcontrol.dal.feature.swing.table.ConfigurableFeatureTableModel.orderByColumn(ConfigurableFeatureTableModel.java:
Model.java:328)
at org.gvsig.app.extension.TableFieldOperations.doExecute(TableFieldOperations.java:73)
at org.gvsig.app.extension.TableFieldOperations.execute(TableFieldOperations.java:54)
at org.gvsig.andami.actioninfo.impl.DefaultActionInfo.execute(DefaultActionInfo.java:215)
at org.gvsig.andami.ui.mdiFrame.MDIFrame.actionPerformed(MDIFrame.java:813)
at javax.swing.AbstractButton.fireActionPerformed(Unknown Source)
at javax.swing.AbstractButton$Handler.actionPerformed(Unknown Source)
at javax.swing.DefaultButtonModel.fireActionPerformed(Unknown Source)
at javax.swing.DefaultButtonModel.setPressed(Unknown Source)
at javax.swing.plaf.basic.BasicButtonListener.mouseReleased(Unknown Source)
at java.awt.AWTEventMulticaster.mouseReleased(Unknown Source)
at java.awt.AWTEventMulticaster.mouseReleased(Unknown Source)

```

Related issues:

Related to Application: gvSIG desktop - gvSIG bugs # 2283: Out of memory navi...

Closed

02/03/2014

History

#1 - 02/21/2013 04:35 PM - Juan Lucas Domínguez

Hello,
 We believe this is because one of the geometries is huge.
 You can try to give gvSIG more memory when it starts.

On Linux, this is done by editing the file gvSIG.sh. Change this line:

GVSIG_MAX_MEM=512M

(Not recommended more than: 1408M)

On Windows, you should edit the file: gvsig-desktop.l4j.ini
(next to the .exe file)

Perhaps you can send us the file or a part of it than contains the huge geometry?

#2 - 02/21/2013 06:39 PM - Cesar Ordiñana

I think the cause is not related to a huge geometry, but because of the ordering being perform with all the shape features (200.000) loaded into memory .

One possible solution would be to load only the feature attributes which are needed to perform the ordering, not loading the geometry and the other attributes. This way much less memory would be used. But this way, when the iterator is used to retrieve the features, each Feature has to be loaded again (maybe through the FeatureReference), with all the needed attributes, so it might become a bit slower. At the end only the page of Features being shown is loaded by the table document, so maybe it is not very noticeable.

#3 - 02/21/2013 06:48 PM - Cesar Ordiñana

Another possible solution, much easier but partial, would to review how the table document is creating the FeatureQuery. As it is not showing the geometry column, it does not need that Feature attribute, only the ones being shown. This way the data document performance would be better.

Its a partial solution because if the user activates the geometry column... bang!

#4 - 01/13/2014 01:26 PM - Álvaro Anguix

- Assignee set to Joaquín del Cerro Murciano
- Priority changed from Normal to Urgent

#5 - 01/16/2014 12:00 PM - Álvaro Anguix

- Target version set to 2.1.0-2218-testing

#6 - 01/16/2014 12:08 PM - Álvaro Anguix

- Tracker changed from gvSIG bugs to gvSIG feature requests
- Target version deleted (2.1.0-2218-testing)

Hola Chevy,

Ordenar un shape se hace en memoria (básicamente ordenar casi cualquier cosa se hace en memoria). Si ordenamos una tabla de un shp de 200.000 registros sin aplicar ningún filtro el comportamiento normal es que pete.

Para subsanar esto, lo correcto no sería usar formatos tipo shp, sino base de datos.

Quizá se podrían hacer cosas, pero a saber el coste de las mismas...

Lo paso a feature request para contemplarlo como posible mejora en el futuro.

#7 - 03/01/2014 03:40 AM - Joaquín del Cerro Murciano

Es posible que los arreglos realizados en relacion al ticket #2283 mejoren algo en relacion a este ticket. No se ha hecho nada al respecto para ordenar en disco (no en memoria), con lo que es probable que con tablas muy grandes siga fallando la ordenacion.

#8 - 04/04/2014 10:27 AM - Álvaro Anguix

- Priority changed from Urgent to Normal

#9 - 04/04/2014 10:39 AM - Álvaro Anguix

- Assignee deleted (Joaquín del Cerro Murciano)

#10 - 01/07/2015 01:36 PM - Álvaro Anguix

- Status changed from New to Closed

Con los últimos builds de la 2.1 he realizado pruebas y ordena shapes de 200.000 registros bastante rápido (pocos segundos) y sin errores. Lo paso a closed.

Files

sort-error.png	48.6 KB	02/13/2013	José Vicente Higón
----------------	---------	------------	--------------------